

# Mini 5C

Economical  
& High Performance



Economical  
& High Performance  
Core Alignment Splicer

# Package



- ① MINI 5C Splicer
- ② Cleaver Pouch
- ③ MINI 50G Cleaver
- ④ Power Cord
- ⑤ USB Cable
- ⑥ AC Adapter
- ⑦ Car Cigar Jack
- ⑧ Cooling Tray
- ⑨ Spare Electrode
- ⑩ Connector Heater Block
- ⑪ Connector Holder
- ⑫ 2 Battery Packs
- ⑬ Shoulder Strap
- ⑭ Operation Manual CD
- ⑮ Hand Carrying Case

\* FTTH / STANDARD KIT : Different Standard Package      \* Car Cigarjack (Optional)

STANDARD PACKAGE : MINI 5C, MINI 50G, 2 Batteries, Power Cord , USB Cable, AC Adapter, Cooling Tray, Spare Electrode, Shoulder Strap, Manual, Carrying Case, 250~900 $\mu$ m Holder, Stripper

FTTH PACKAGE : MINI 5C, MINI 50G, 2 Batteries, Power Cord . USB Cable, AC Adapter, Cooling Tray, Spare Electrode, Shoulder Strap, Manual, Carrying Case, Universal Holder, Stripper, Connector Heater Block, Connector Holder

# Specifications

Splicing Method	Economical & High Performance Core Alignment Splicer
Average Loss	SM(0.02dB) / MM(0.01dB) / DS(0.04dB) / NZDS(0.04dB) / G.657(0.02dB)
Return Loss	>>60dB
Splice Time	9s average SM / SM 7s Quick mode
Electrode Lifespan	> 3,500 arcs
Applicable Fiber	SM(ITU-TU.652,MM(ITU-TU.651), DS(ITU-T G.653), NZDS(ITU-T.655),G657A, G657B 0.25mm, 0.9mm, 2.0mm, 2.4mm, 3.0mm, FLAT(indoor cable) and IEC standards
Cleaved Length	Coating Diameter < 0.25mm = 5-16mm, Coating Diameter > 0.25mm = 16mm minimum
Coating Diameter	100-1,000um
Cladding Diameter	80-150um
Heating Programs	Factory installed mode : 9, User installable mode : 23
Heating Time	Typical 18s
Protection Sleeve	40mm, 60mm, SOC Connector
Data Output	Micro USB
Splice Programs	Factory installed mode: 33, User installable mode: 70+
Splice Memory	Up to 2,000 records and 2,000 splice images
Battery	Typical 250 Cycles (Splice & Heat) / single battery Li-ion / 2 Batteries Standard
Power Supply	50/60 Hz, AC 100-240V input or DC 9-15V
Monitor	Color 4.3" LCD monitor, with Touch Screen (Tempered Glass)
Cameras	2 CCD camera system
Magnification	XY style : 150 power, X/Y : 320 power
Fiber Display	X/Y or XY, single X.Y
Weight	1.31 Kg (without battery) , 1.8 kg (with battery)
Size	138mm x 122mm x 124mm
Wind Protection	The max wind speed 15m/s
Operating Environment	Elevation 0-5,000 meters, -40~80°C, 0~95% relative humidity
Storage Condition	Temperature -40 to 80°C, 0~95% relative humidity, battery -20~30°C
Pull Test	1.96~2.25N (standard)
Resistance Features	Anti-shock,Dustproof,Waterproof with IPS2



Copyright © 2013 FiberFox, Inc. All rights reserved.  
 (Kwang Yi B/D) 80, Dongseo-daero 179beon-gil, Yuseong-gu, Daejeon 305-320, Korea  
 Tel : +82-42-716-7221 / Fax : +82-42-716-7223 / E-mail : sales@fiberfox.co.kr

www.fiberfox.co.kr

# 01

## Compact & Light Core Alignment Splicer

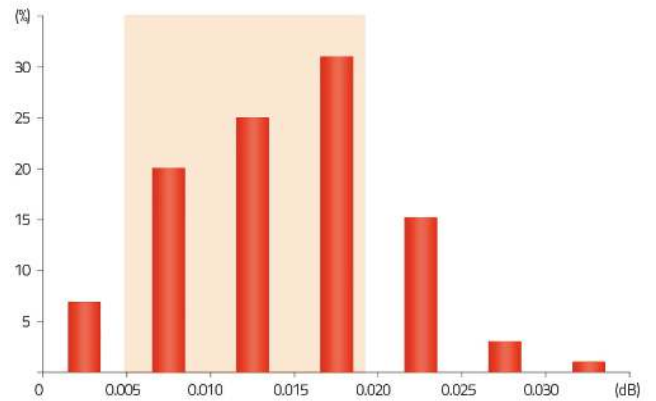


1.31kg  
(Without Battery)

# 02

## Performance

The most stable loss condition  
under different  
environmental conditions



0.005 - 0.019dB : 75 (%)

# 03

## Durability

1 meter



Anti-shock



Dustproof

Waterproof



# 04

## SOC Compatible





# Characteristic



Heating Time  
- 18 sec <60mm sleeve>



Universal Holder (FTTH Kit)  
- 250  $\mu$ m  
- 900  $\mu$ m  
- 2-3 $\phi$   
- Indoor



Applicable Cleaved Length  
- Up to 5mm



Two Batteries are Included in Standard Package  
- 5,200 mAh (Two Batteries Standard)  
- 250 cycles (Splicing & Heating) with one battery



Full Touch Screen  
- GUI Interface  
- Tempered Glass